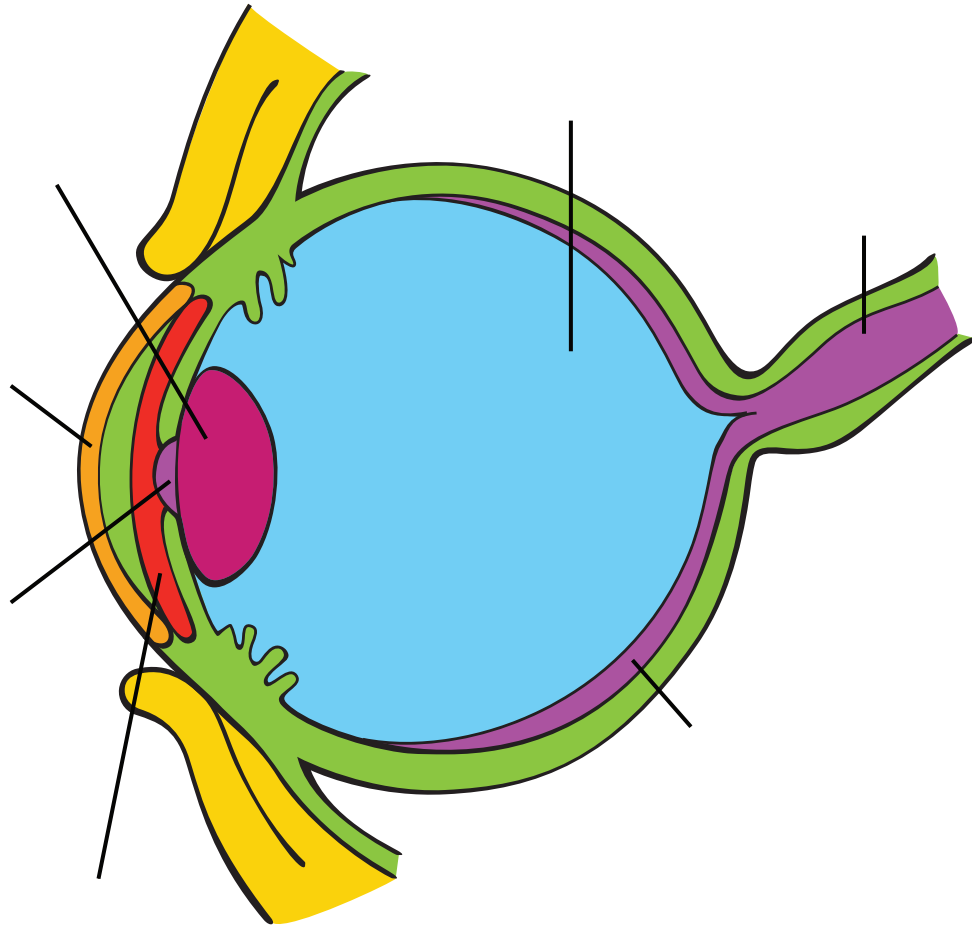
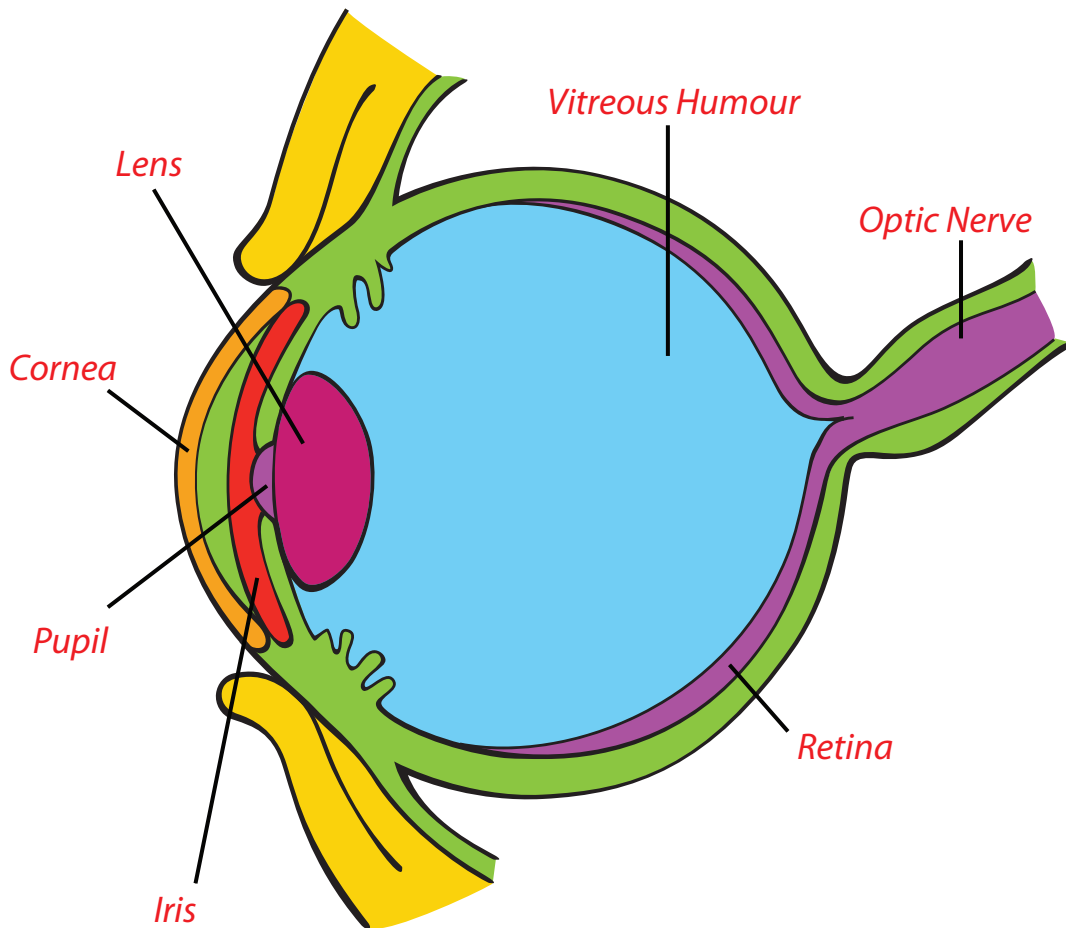


Our Eyes

Mark the labeled parts and write their functions.



Answer:



Cornea – Outermost transparent layer of eye and begins the focusing process.

Pupil – Opening to the inner eye

Iris – Controls size of pupil

Lens – Focuses image of object (on retina)

Retina – Contains cells that detect light

Vitreous humor – It keeps the retina in place and helps to maintain the shape of the posterior chamber of the eyeball.

Optic Nerve – Transmits information to the brain