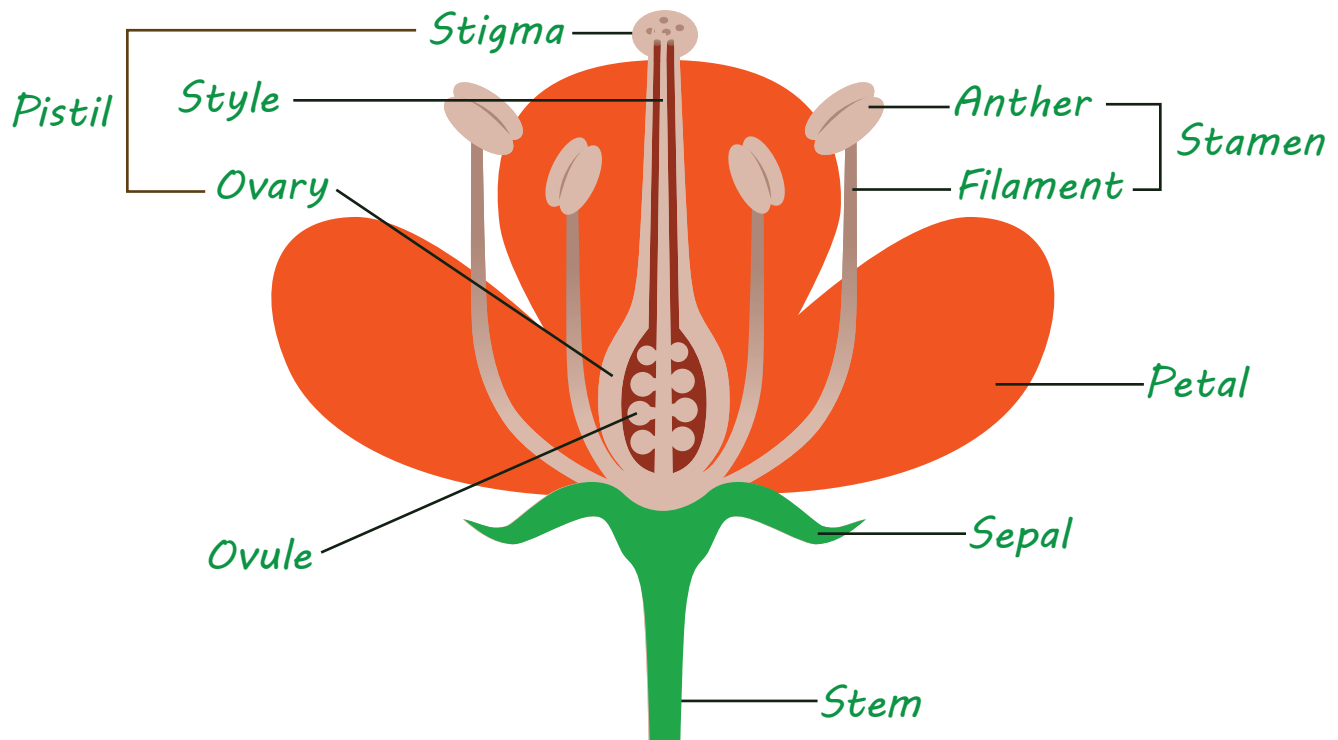




Flower Anatomy

All the flowers you see in gardens and parks have the same parts. Check them out!



Anther – This is where you can find the pollen

Filament – This is the stalk that supports the anther

Ovary – Maturing seeds are surrounded by this. It turns into a fruit in some plants

Ovule – This eventually turns into a seed

Petals – These are brightly colored modified leaves that surround reproductive parts.

Sepal – These are modified leaves that surround the bud.

Stem – This is the stalk that supports the flower

Stigma – This is the container that holds the pollen

Style – The stalk located between the ovary and the stigma