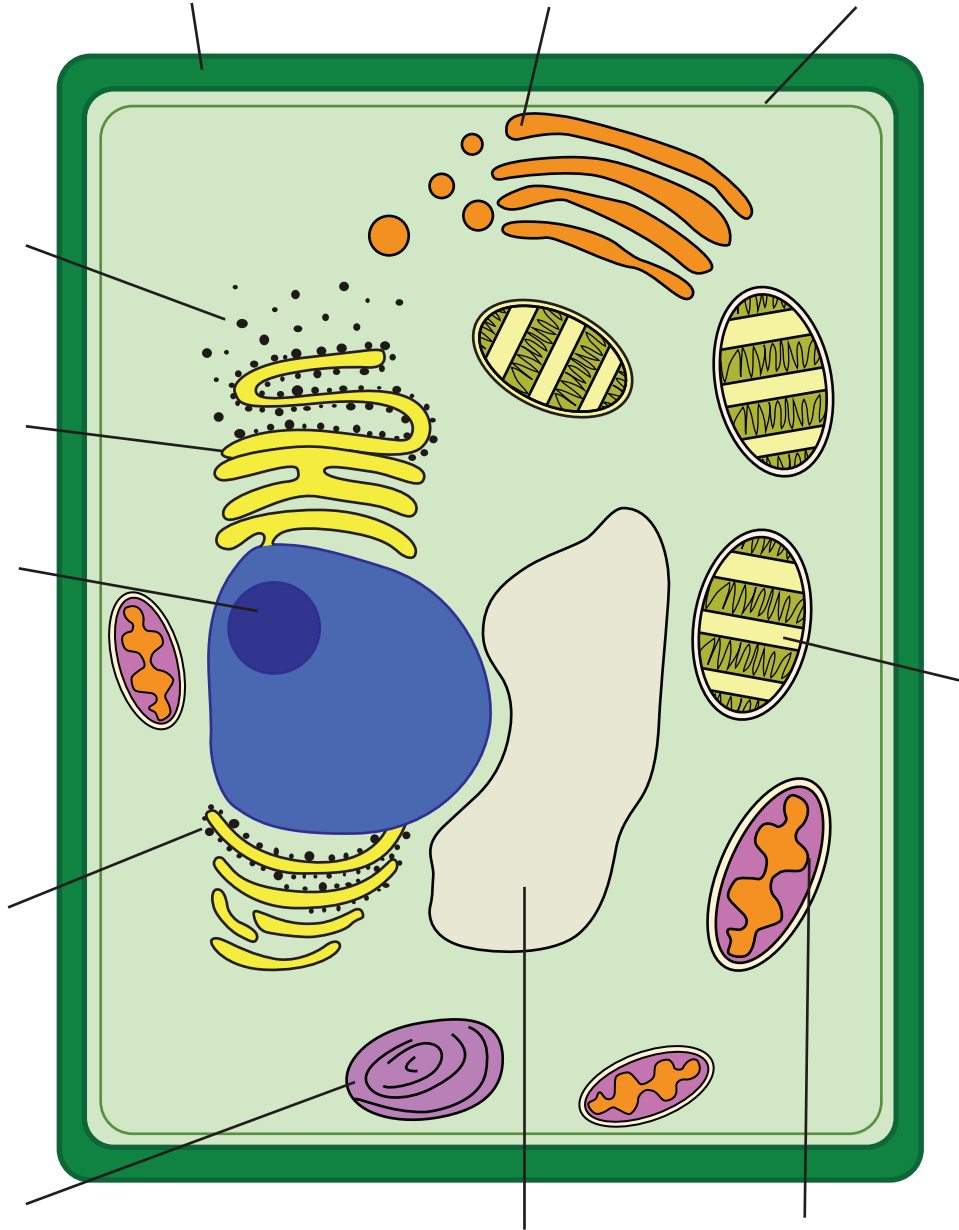




# Cells of a Plant

Label the diagram of a plant cell below.





Answer the following questions on plant cells.

1. What is a ribosome?

---

---

---

2. How does the cell membrane act as a protective layer?

---

---

---

3. What are chloroplasts made of? How do they help plants?

---

---

---

---

4. What is the primary function of mitochondrion?

---

---

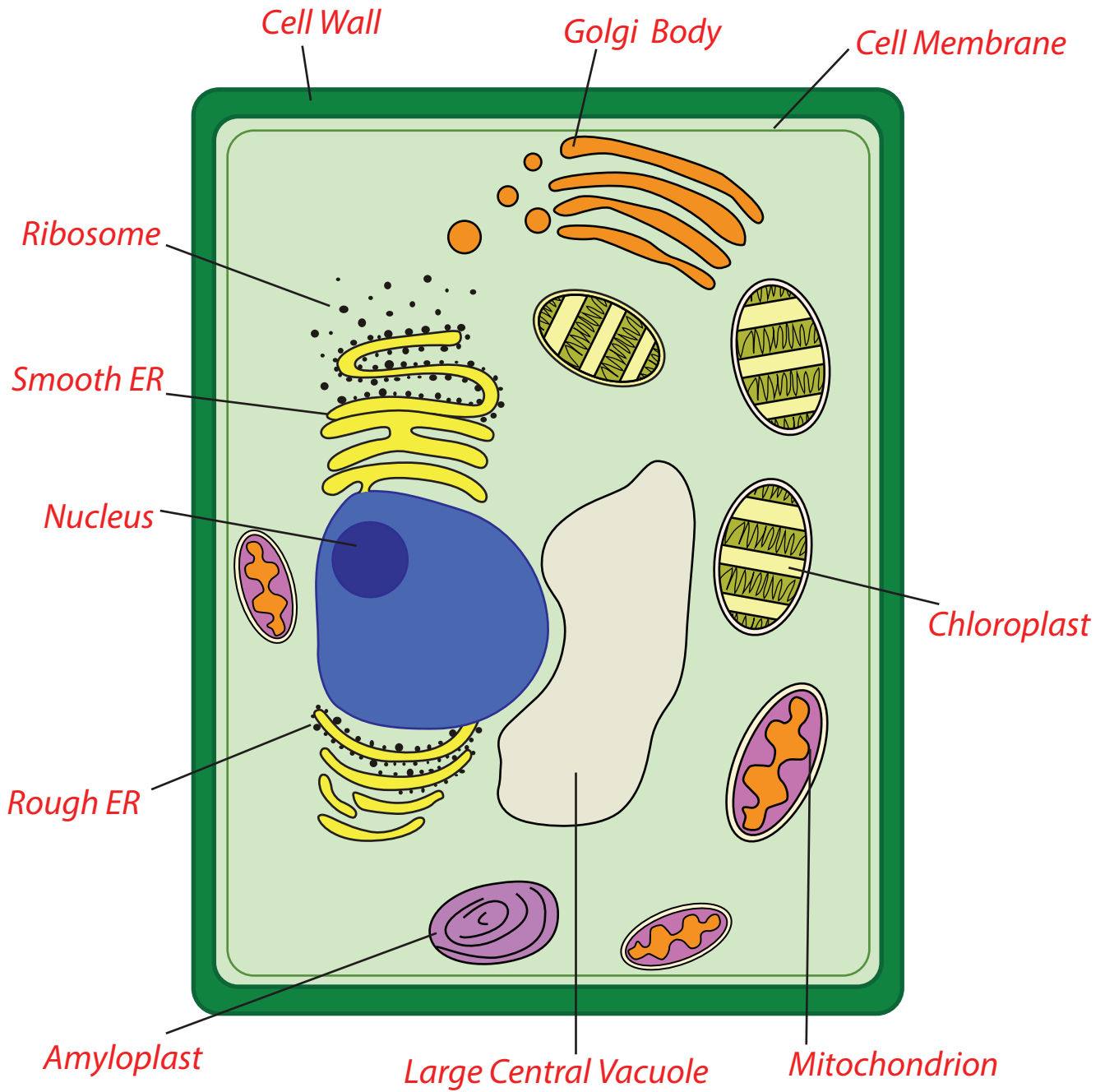
5. What is the main difference between smooth ER and rough ER?

---

---



# Answer:





1. What is a ribosome?

*Ribosome is a minute particle consisting of RNA and associated proteins found in large numbers in the cytoplasm of living cells.*

2. How does the cell membrane act as a protective layer?

*The cell membrane is a thin semi-permeable membrane that surrounds the cytoplasm of a cell, enclosing its contents.*

3. What are chloroplasts made of? How do they help plants?

*Chloroplasts are made of lipid and protein membranes all folded-around in a complex way. They are the part of the plant that contains chlorophyll that uses the sunlight for the process of photosynthesis.*

4. What is the primary function of mitochondrion?

*The primary function of mitochondrion is to produce energy that plays the central role in the metabolism in plants.*

5. What is the main difference between smooth ER and rough ER?

*The rough ER has ribosomes in it but the smooth ER does not have any ribosomes.*